

BUSINESS TIMES®

MARCH 11-17, 2011

SERVING SANTA BARBARA, VENTURA AND SAN LUIS OBISPO COUNTIES • WWW.PACBIZTIMES.COM

VOL. 12, No. 1

Who's Who in Commercial Real Estate & Construction

Barton Stern

President

Ventura Investment Co.,
Ventura

Barton Stern has been president of Ventura Investment Co. since 1992. The Camarillo-based firm is ranked by the Business Times as the second-largest property management firm in the tri-counties. Ventura Investment Co. operates properties under its ownership and contracts with other investors for management services.

Stern, 41, focuses with investment partners on the purchase and disposition of multifamily and commercial properties in the Southwestern U.S. In 2010 he served as the Superior Court-appointed receiver on the largest multifamily foreclosure in the region. The firm then acted as managing agent for the lender until the property sold. Ventura Investment Co. is active in contracting with major lenders for management and renovation of foreclosed multifamily communities.

In 2011, Stern is focusing the firm on continued investment in multifamily properties in coastal Santa Barbara and Ventura Counties and in Las Vegas. He was recently appointed by the Ventura



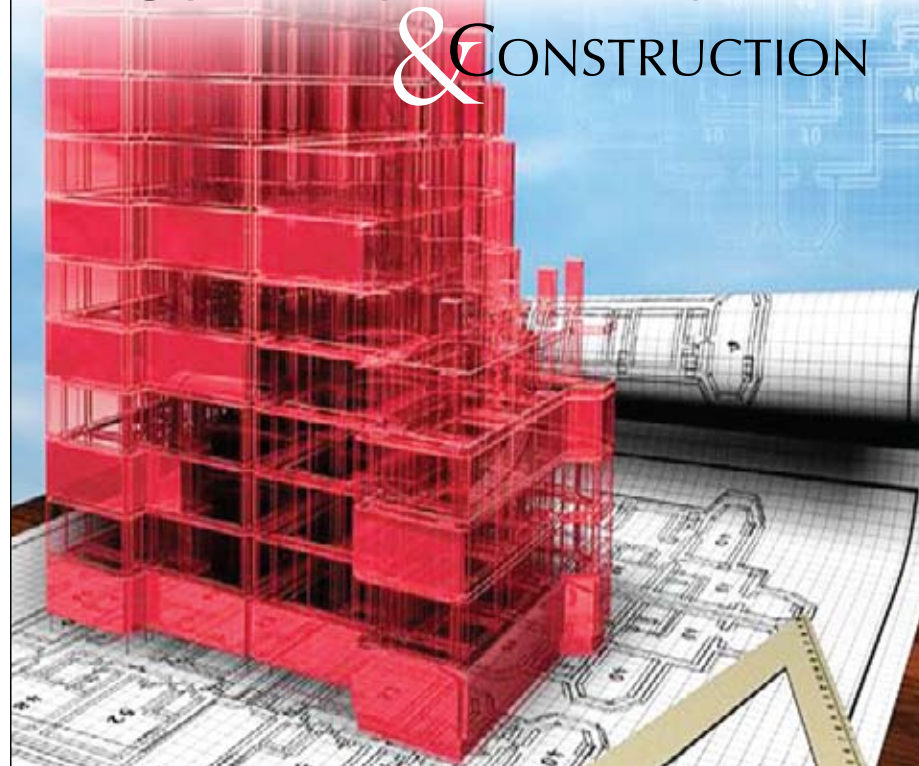
County Board of Supervisors as chairman of the Property Tax Assessment Appeals Board, and he serves as a city of Camarillo commissioner on the Rent Review Commission.

The firm will expand its services in 2011 to lenders for management of foreclosed properties. Stern holds a bachelor's degree in

PACIFIC COAST BUSINESS TIMES

MARCH 11-MARCH 17, 2011 VOLUME 12, ISSUE 1

WHO'S WHO IN COMMERCIAL REAL ESTATE & CONSTRUCTION



communications from USC and is a past president of the regional chapter of the Institute of Real

Estate Management, the Rotary Club of Camarillo and the Camarillo Chamber of Commerce.

We salute those who cornered the regional market on resilience



HENRY DUBROFF
Editor

The 2011 edition of Who's Who in Commercial Real Estate and Construction reflects the beginning of a turnaround in this important sector of the tri-counties economy.

As a member of our Who's Who family of special reports, Who's Who in Commercial Real Estate and Construction

has been an essential part of our editorial calendar since 2002. During the past 10 years we have learned a lot about what it takes to survive the ups and downs of the economic cycle in the Tri-Counties.

The real players in the Ventura, Santa Barbara and San Luis Obispo market learn how to navigate the tough rules for development, and they have created the distinctive style that marks the commercial landscape in our region.

As the economy turns around, we

think it's important to recognize that the commercial real estate sector continues to reinvent itself and use technology to deliver new services to customers.

We also welcome the emergence of initiatives to promote greener building practices as California carves out a leadership role in reducing carbon emissions.

Who's Who in Commercial Real Estate and Construction was produced and researched by Special Reports Editor Jim Logan. Also involved in the effort was

Real Estate Editor Marlize van Romburgh. Advertising Graphic Artist Liz Nadel designed the cover.

Our next special report is our Top Women in Business special report, which publishes on March 25, and our next who's who section is Who's Who in Professional Services, which publishes on May 6.

If you have any comments or suggestions, please feel free to contact me at (805) 560-6950, ext. 222, or hdubroff@pacbiztimes.com.